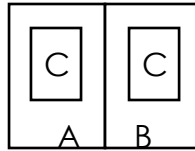


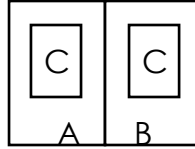
COLOR: What did we learn?

1. Identify, by number, 3 values you would use to make one gray appear to be two different grays.

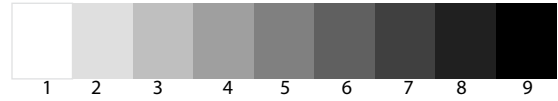


A, ___ B, ___ C, ___

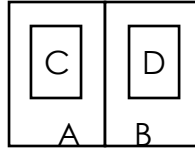
2. Select three values used to make three values appear as 2, or looking like reverse grounds.



A, ___ B, ___ C, ___

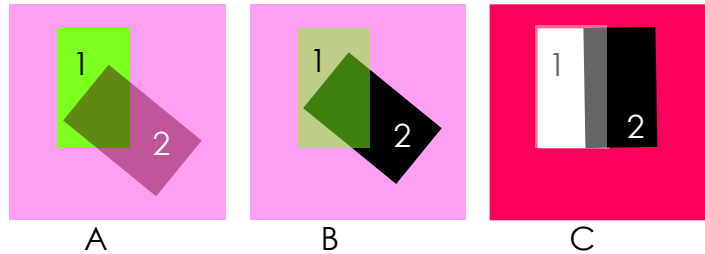


3. Select four values used to make four values appearing as three.



A, ___ B, ___ C, ___ D, ___

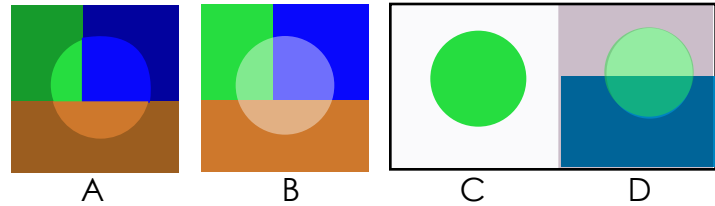
4. Find the TRUE ___ and FALSE ___ film example.



5. Which exemplifies bad Gestalt and lack of any relationship between the film and its background.

6. Veils are similar to films in that both possess transparency, but how do they differ?

7. How does a white light differ from a veil?



Which of these two is an example of a white spotlight? ___

8. Comparing "C" and "D", which better illustrates a green light? ___.

9. Which of the following is the answer/s for the selection in the previous question? ___

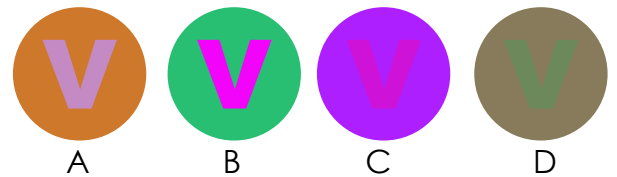
a. Bad Gestalt. b. A light will never darken. c. The influence of a green light on multiple colors.

10. Which of these arrays would you use to create the illusion of VOLUME COLOR? ___



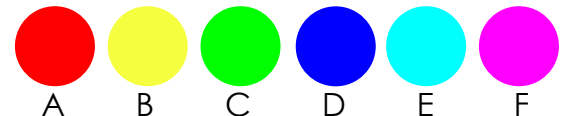
11. Which exemplifies a VANISHING BOUNDARY? ___

12. Which exemplifies a VIBRATING BOUNDARY? ___



13. Identify the Primary Pigment Colors. _____

14. Identify the Primary Colors of Light. _____



15. How many of the assignments involve relationships? _____

